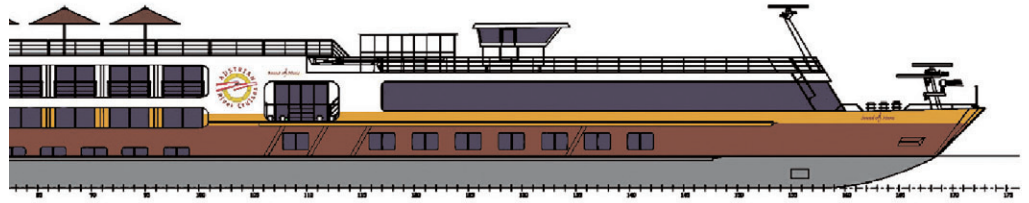


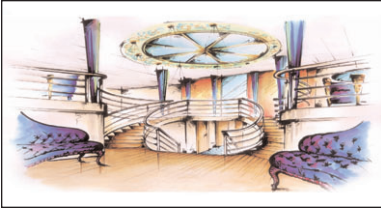


INTERNATIONAL
DESTINATION
MARKETING

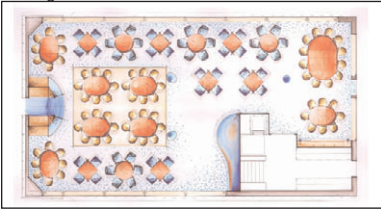
Sound of Music



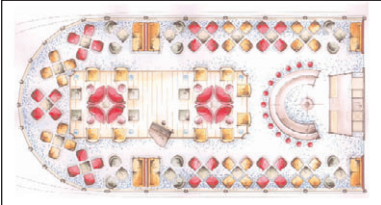
Reception Lobby



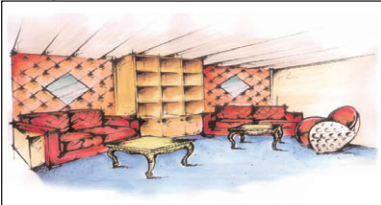
Dining Room Overview



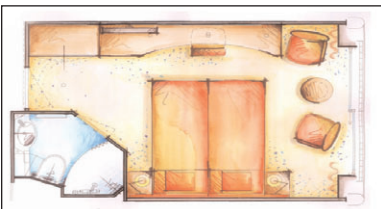
Lounge overview



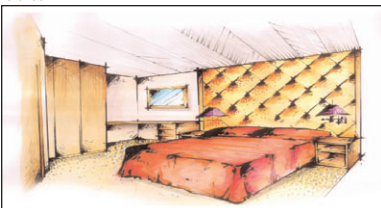
Library



2-Bed Cabin Overview



Suite



MS Sound of Music ★★★★★

The *MS Sound of Music* will offer the finest Austrian hospitality and service of any ship cruising on European rivers. Superb service, gourmet features, spa and exercise facilities, and marvelous sightseeing all combine to create a truly unforgettable cruising experience. The *MS Sound of Music* will feature programs on the Rhine, Main, Moselle and Danube rivers.

To be launched in March 2006, the *MS Sound of Music* will carry a maximum of 128 guests. The three passenger decks contain 64 cabins, a lobby, library, lounge and dining room. It also features a 1200 sq. ft. spa & fitness center. Cabins on the Danube Deck have French balconies, while those on the Rhine Deck have panorama windows that open.

The *MS Sound of Music* also features Flexi-Suites — the ability to convert 22 Danube Deck cabins into 11 suites.

Wake up to a Continental breakfast in your cabin, an early-bird breakfast, or a European-style and American hot buffet breakfast. Three-course lunches and four-course dinners, both with salad bars, offer four different menus per meal. Enjoy cheese/appetizer/dessert buffets during the day, coffee and cake in the afternoon, snacks or a buffet at midnight.



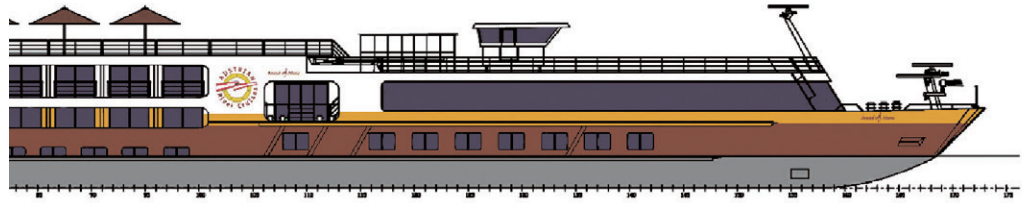
Austrian River Cruises
ARC Touristik GmbH, A-1020 Vienna

In North America, contact:
International Destination Marketing
St. Louis, MO
314/525-2524
www.internationaldestinationmarketing.com

Cruise Area
Rhine - Main - Moselle - Danube



Austrian hospitality on European & Russian Waterways!



MS Sound of Music ★★★★★

Technical Facts

- ❖ 64 outside cabins
- ❖ Passengers – maximum 128
- ❖ Crew – 34
- ❖ 2 decks – 3 passenger decks
- ❖ Length – 361 ft.
- ❖ Beam – 37 ft.
- ❖ Speed – 12.5 knots

General Specifications

- ❖ Built in the Merwede shipyard of Holland, Switzerland registry.
- ❖ To be launched in Amsterdam by mid-March 2006.
- ❖ Austrian chef and hotel management
- ❖ Library
- ❖ 1200 sq. ft. spa & fitness center with 2 therapists
- ❖ 24-hour room service
- ❖ Breakfast options
 - Early-bird breakfast with coffee, tea, juices and assorted pastries
 - European- and American-style hot buffet breakfast
- ❖ Three-course lunch plus salad bar. Cake and coffee in the afternoon. During the day, snacks like hamburgers, hot dogs and soup will be offered at all times.
- ❖ Four-course dinner — fully served
- ❖ During a week's cruise, there will be one special dessert buffet, one special pastry buffet, and one midnight buffet.
- ❖ Hot towels and various juices at check-in after excursions
- ❖ Coffee, tea and water available free of charge all day
- ❖ Air-conditioned (thermostat control in each cabin)
- ❖ Flat-screen TV with satellite hookup in each cabin
- ❖ Email and internet access in each cabin
- ❖ Telephone in each cabin (international access)
- ❖ 220 electric voltage
- ❖ Hair dryer in each cabin
- ❖ Video equipment and screen in lounge for lectures
- ❖ Cabins on Danube Deck have French balconies.
- ❖ Cabins on the Rhine Deck have panorama windows that open.
- ❖ Flexi-Suites — 2 Danube Deck cabins can be converted into 1 suite.
- ❖ Daily fresh fruit basket in cabin
- ❖ Assorted chocolates for special occasions
- ❖ Entire ship is non-smoking.
- ❖ A doctor will always be onboard.
- ❖ MasterCard and VISA accepted on board.
- ❖ All expenses during the cruise are charged to a cabin account and paid for by credit card at the end of the trip.

